

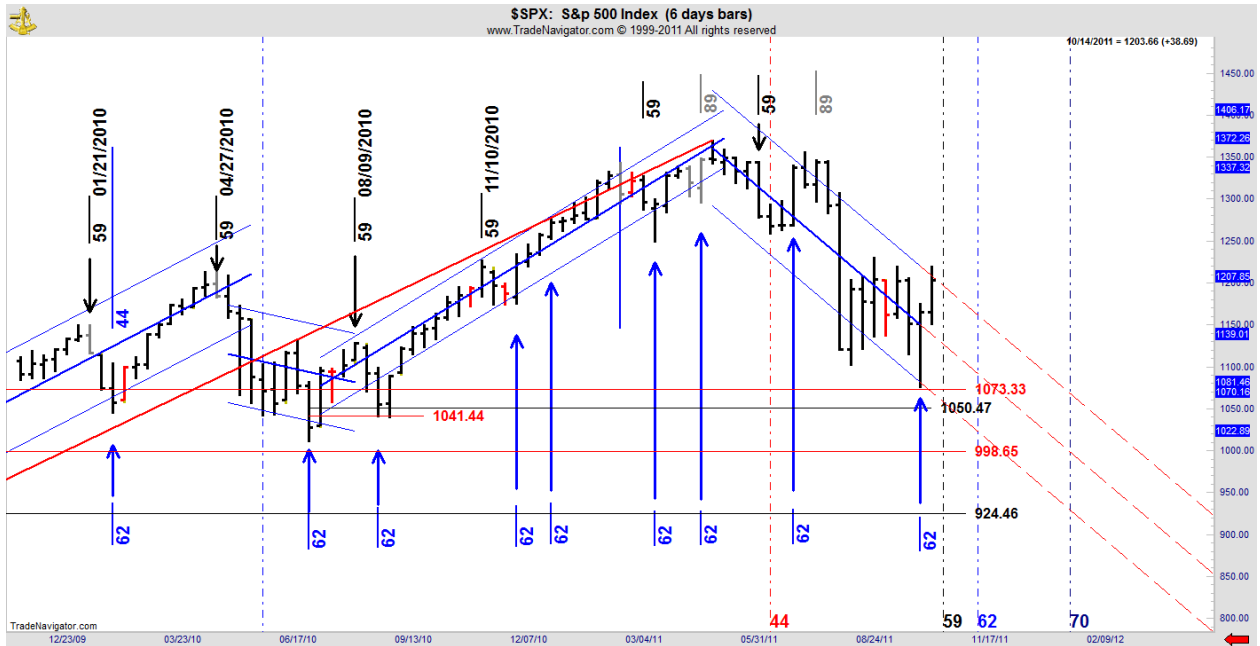
14 October 2011-Long Term Trend Charts-Major Markets

S&P

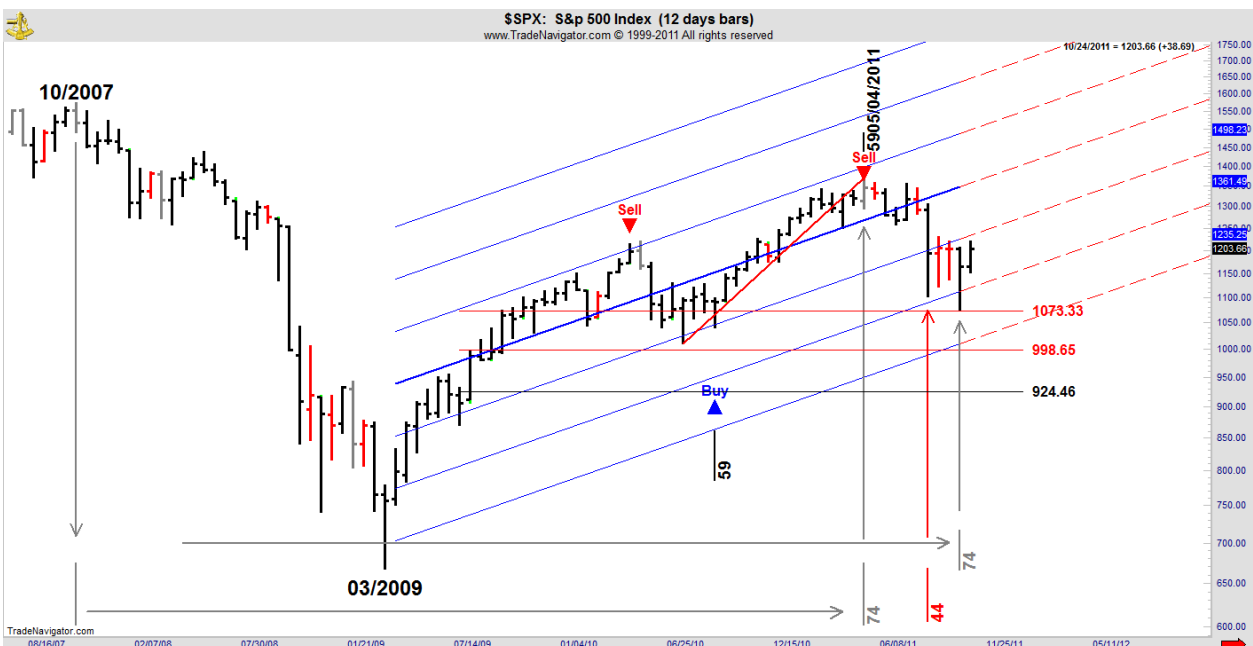
On 6 Day Regression Channel, Trend is: DOWN

On 12 Day Regression Channel, Trend is: DOWN

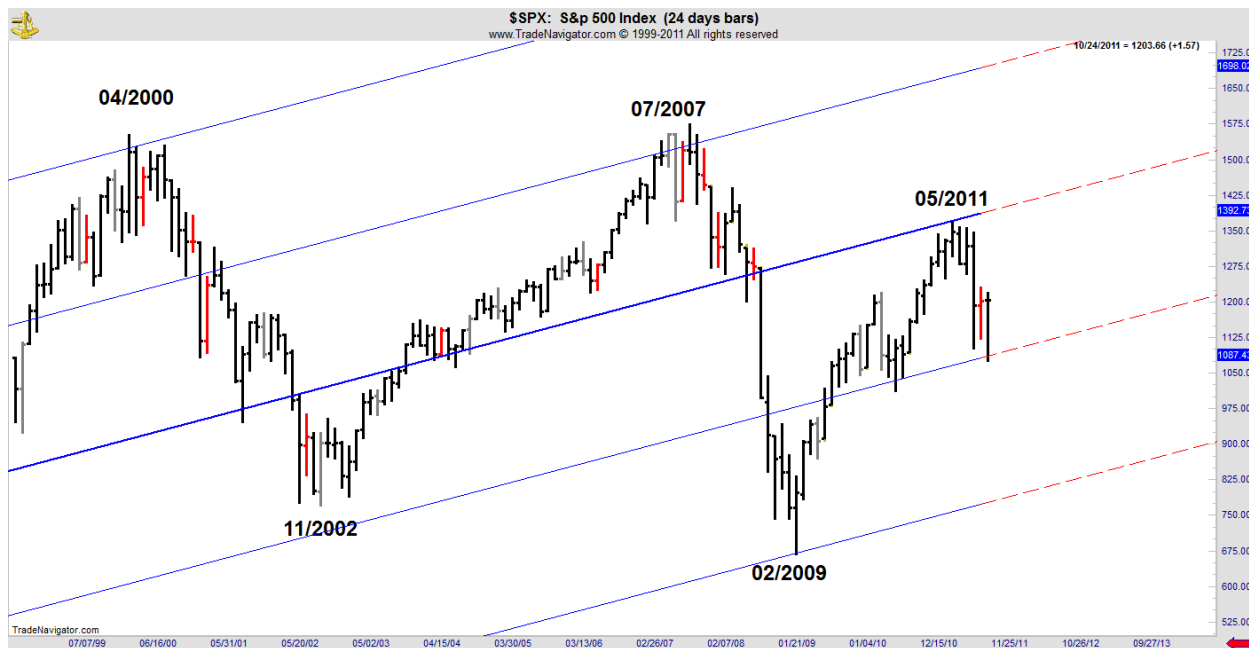
On 24 Day Regression Channel, Trend is: UP, but now with 2 conditional Sell signal



12 Day chart repeated its use of the DC 74 cycle to find a time and price low on the 10/06 bar. Recognizable DC time cycle plus recognizable DC price retracement = “Time and Price Squared”, which makes a turn almost inevitable. Note that only the minor swing is being corrected on this chart. Why do these DC time cycles repeat? This from King Solomon in Ecclesiastes 3:15 “That which hath been is now; and that which is to be hath already been; and God requireth that which is past.” Pretty simple really.



This is the 24 Day DC time chart. There are now 2 conditional Sell signals on this chart, but it found support quite happily at the 4th Degree line. This market is weak as it's trading below the median line, but is building support with two visits to the bottom of its operating channel and prompt recoveries both times. Despite the rhetoric of Witchdoctors, this chart is so far just making a normal correction after being heavily juiced to get to its 2011 high.



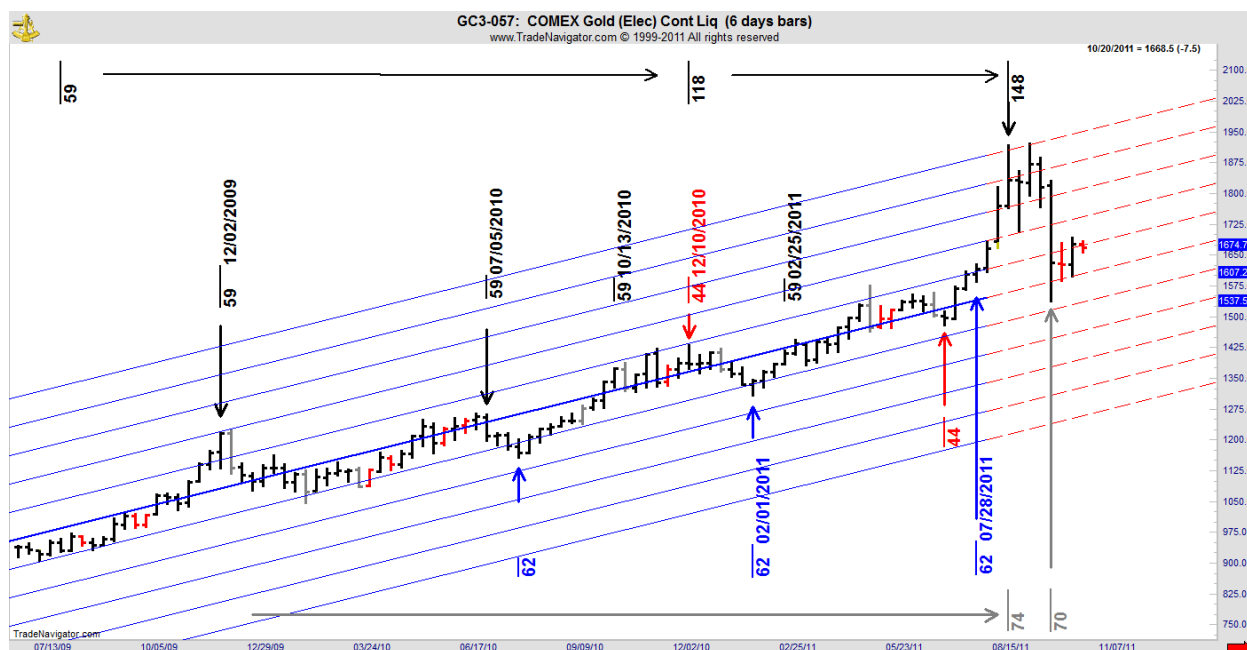
Gold

On 6 Day Regression Channel, Trend is: UP, but now with 2 conditional Sell signals.

On 12 Day Regression Channel, Trend is: UP

On 24 Day Regression Channel, Trend is: UP

Losing its organization and we can see that by the switch away from its traditional vibrations.

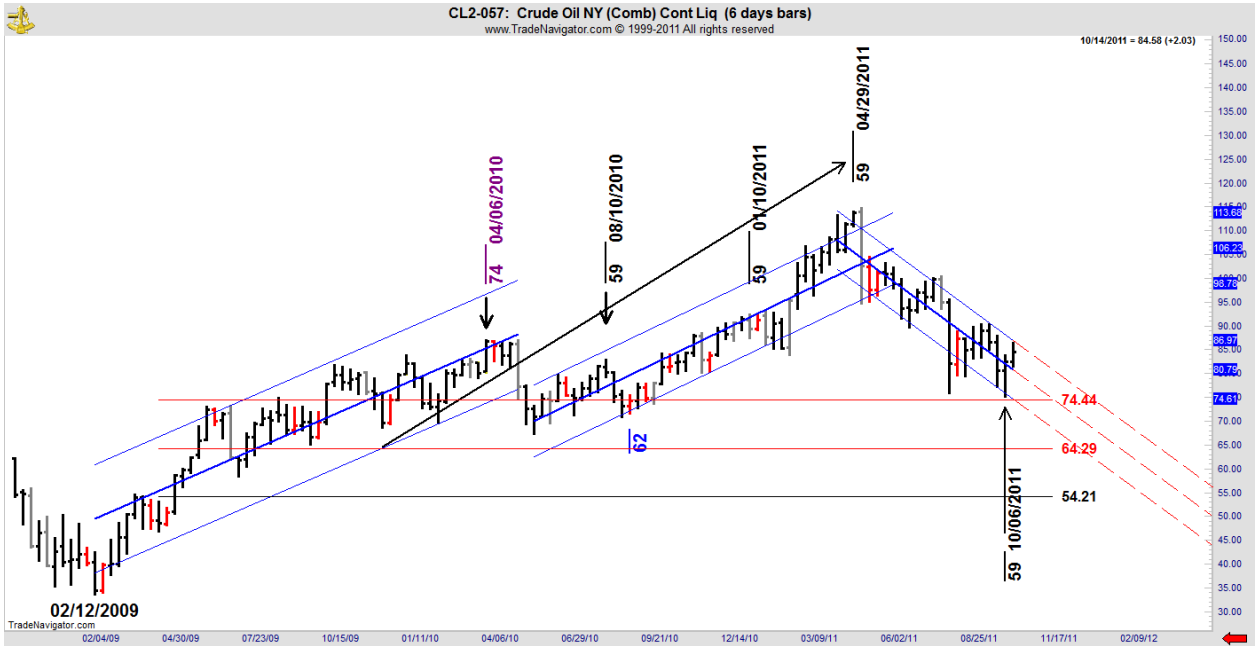


OIL

On 6 Day Regression Channel, Trend is: DOWN

On 12 Day Regression Channel, Trend is: DOWN

On 24 Day Regression Channel, Trend is: UP, but now with 2 conditional Sell signal.

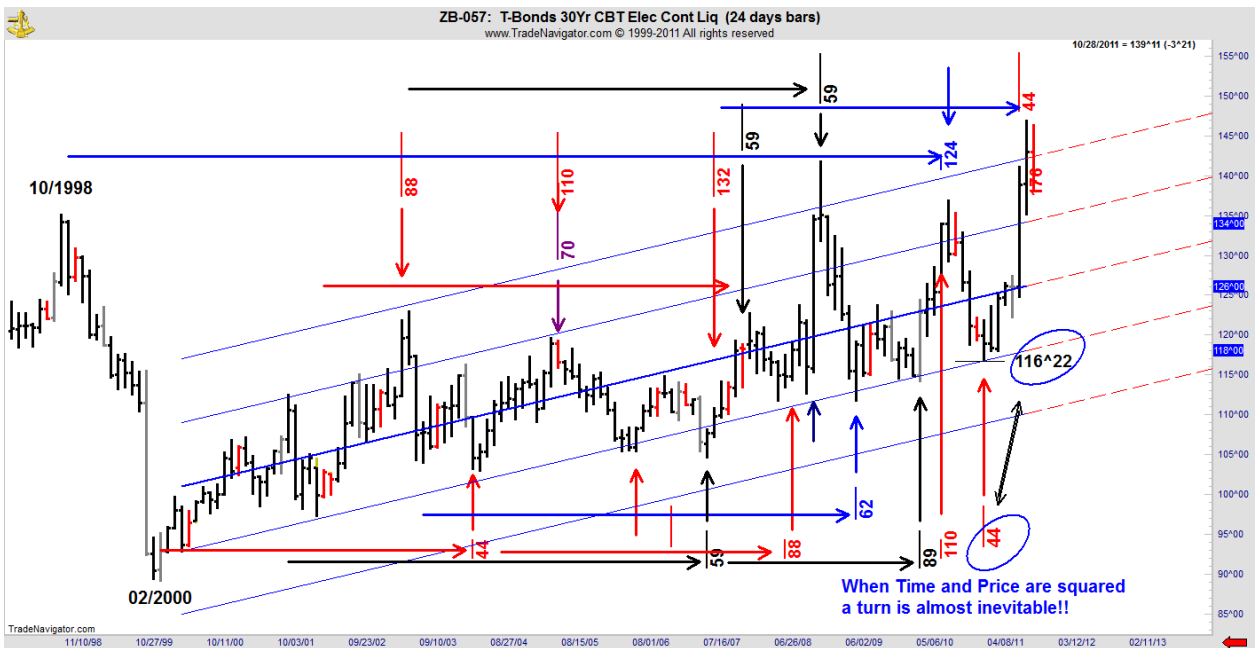


US T Bonds

On 6 Day Regression Channel, Trend is: UP

On 12 Day Regression Channel, Trend is: UP

On 24 Day Regression Channel, Trend is: UP



EUR-USD

On 6 Day Regression Channel, Trend is: DOWN

On 12 Day Regression Channel, Trend is: DOWN

On 24 Day Regression Channel, Trend is: UP



Nice on the 12 Day Chart.

